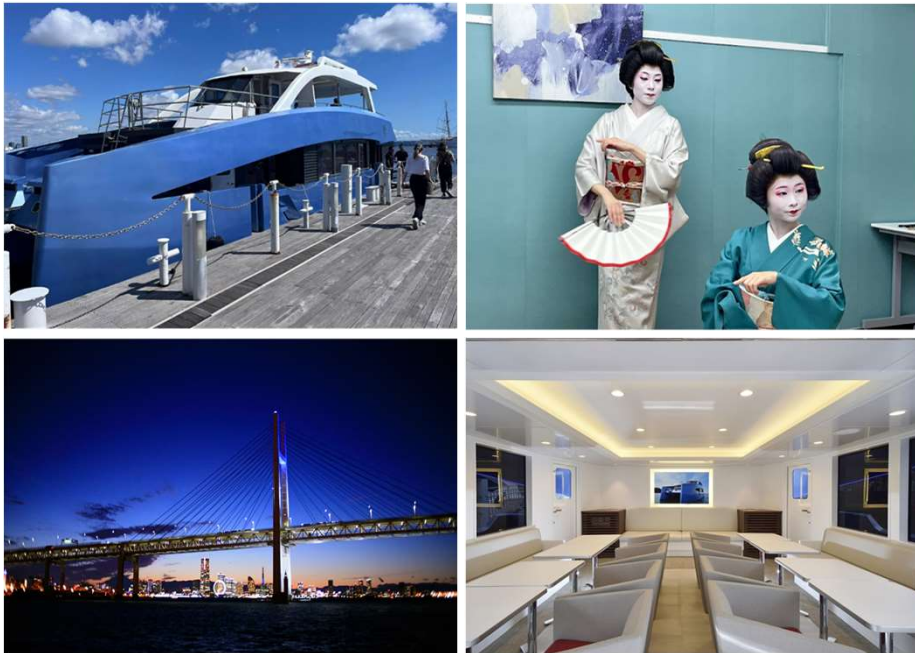


1-A. Yokohama Bay Private Cruise With Geisha Performance Option

Kanagawa/Yokohama



The Experience

Charter a small yacht, relax, and enjoy the scenery of the Port of Yokohama during the evening on into the night. Watch a traditional geisha performance, then talk and play games with the performers after the show.

Sales Points

- Take in unique views of Yokohama Bay.
- Enjoy the quiet atmosphere of a private party.
- Appreciate a geisha performance not far from Tokyo.

Note: Cruises are subject to cancellation due to inclement weather or dangerous water conditions.

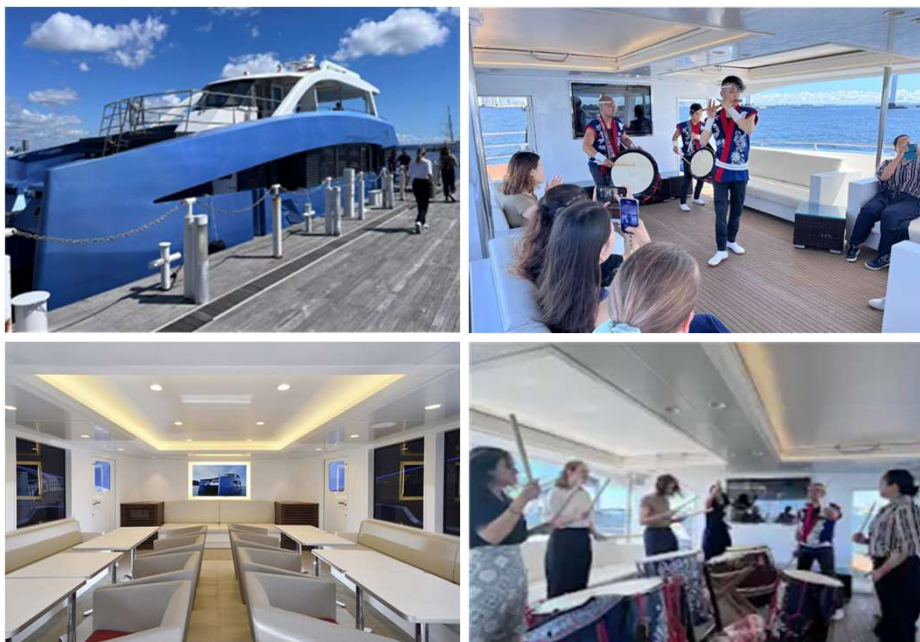
General Information

- Contact: Kanagawa DMO
- Business hours: 9:00-17:00
- Website: <https://www.kanagawa-kankou.or.jp/>
- Phone: 045-681-0007
- Email: product@kanagawa-kankou.or.jp

Tour types	Individual ・ group
Target	Interactive cultural experience
Prices	Please inquire
Includes	Cruise ship charter & geisha fees (3 performers)
Meeting point	<ul style="list-style-type: none"> ・ Pukari Sanbashi Pier ・ Red Brick Warehouse Pier ・ Zou-no-hana Pier ・ Shinko futo Pier etc
Reservation deadline	At least 2 weeks prior
Reservation period	Year-round
Start time & duration	5 p.m. start (start time flexible), 2-hour cruise
Cruisers	Ciel Bleu (capacity: 48) * Maximum bookable group size: 15 (Group size limited due to performers & other staff also onboard) Ocean Bleu (capacity: 94) MY2 (capacity: 20) * Other cruisers available
Group size	1 person or more (only private bookings)
Private?	Private booking only
Languages	<input type="checkbox"/> EN <input type="checkbox"/> CN <input type="checkbox"/> KR <input type="checkbox"/> Other:
Guide provided?	No

1-B. Yokohama Bay Private Cruise With Taiko Performance Option

Kanagawa/Yokohama



The Experience

Charter a small yacht, relax, and enjoy the scenery of the Port of Yokohama during the evening on into the night. Take in a taiko performance by Dako-on, one of the most talented taiko drum performance groups in Japan. You might even learn how to play the taiko drum!

Sales Points

- Take in a unique view of Yokohama Bay.
- Enjoy the quiet atmosphere of a private party.
- Watch a taiko drum performance in total privacy.

Note: Cruises are subject to cancellation due to inclement weather or dangerous water conditions

General Information

- Contact: Kanagawa DMO
- Business hours: 9:00-17:00
- Website: <https://www.kanagawa-kankou.or.jp/>
- Phone: 045-681-0007
- Email: product@kanagawa-kankou.or.jp

Tour types	Individual • group
Target	Interactive cultural experience
Prices	Please inquire
Includes	Boat rental • taiko performance • Experience fee
Meeting point	<ul style="list-style-type: none">• Pukari Sanbashi Pier• Red Brick Warehouse Pier• Zou-no-hana Pier• Shinko futo Pier etc
Reservation deadline	At least 2 weeks prior
Reservation period	Year-round
Start time & duration	5 p.m. start (start time flexible), 2-hour cruise
Group size	2-30 persons per group (min/max)
Private?	Private booking only
Languages	<input type="checkbox"/> EN <input type="checkbox"/> CN <input type="checkbox"/> KR <input type="checkbox"/> Other:
Guide provided?	No

2. Learn Kamakura Style Wood Carving With a Local Craftsman

Kanagawa／Kamakura



The Experience

Learn about wood carving in the 800-year-old Kamakura Style with direct guidance from a traditional craftsman. You will carve your own intricate piece as you trace an outline from materials prepared by the artisan. Craftsmen will later finish the carving and layer it with urushi lacquer. It will be sent to your home at a later date (finishing and shipping may take 4 months or more).

Sales Point

- Genuine Kamakura-bori carver will be your instructor.
- Try your hand at this 800-year-old craft in a group setting.

Note: This activity involves the use of sharp tools and may not be available for children 10 and under.

General Information

- Contact: Kanagawa DMO
- Business hours: 9:00-17:00
- Website: <https://www.kanagawa-kankou.or.jp/>
- Phone: 045-681-0007
- Email: product@kanagawa-kankou.or.jp

Tour type

Individual

Target

Interactive/creative cultural experiences

Prices

Please inquire

Includes

Activity fee • insurance • materials • admission fee

Meeting point

Kamakurabori Assembly Hall 3rd Floor
Komachi 2-15-13, Kamakura City, Kanagawa
Prefecture 248-0006

Directions

5-minute walk from Kamakura Station

Reservation deadline

At least 1 month prior

Reservation period

Year-round

Start time & duration

1 p.m. start (start time flexible), 1.5-hour
experience (approximate)

Group size

1-20 persons per group (min/max)

Private?

No

Languages

☐EN ☐CN ☐KR ☐Other:

Guide provided?

No

3-A. Kamakura Garden Tour & Lunch With a Local Kamakura Garden Designer

Kanagawa／Kamakura



The Experience

Join Ms. Imoto, a garden designer residing in Kamakura, on this tour of carefully selected Japanese gardens. In addition to guiding and showing you the gardens of Kamakura's famous landmarks such as Engakuji Temple and Jochiji Temple, Ms. Imoto will tell you about the areas' historical sites as well. Lunch will be traditional Japanese cuisine consisting of a variety of vegetables, seafood, and rice. This experience offers the opportunity to truly immerse yourself in Kamakura.

** Ms. Imoto offers many options arranging different locations. Please inquire for more details.*

Sales Points

- Enjoy natural scenery from the perspective of a garden designer.
- Explore places in Kamakura that only locals know about and learn about Kamakura's history and lifestyle.
- Discover Japanese nature under Ms. Imoto's guidance.

Note: This tour includes 3 hours of walking over different elevations.

General Information

- Contact: Kanagawa DMO
- Business hours: 9:00-17:00
- Website: <https://www.kanagawa-kankou.or.jp/>
- Phone: 045-681-0007
- Email: product@kanagawa-kankou.or.jp

Tour types

Individual ・ group

Target

Botany/Japanese local culture enthusiasts

Prices

Please inquire

Includes

Guide fee ・ temple/garden admission fee ・ lunch ・ experience fee (matcha or shakyo sutra writing)

Meeting point

Kita-Kamakura Station
501 Yamanouchi, Kamakura City, Kanagawa Prefecture

Directions

JR Kita-Kamakura Station (Enkakuji Entrance)
Yamanouchi, Kamakura City, Kanagawa Prefecture

Reservation deadline

At least 2 weeks prior

Reservation period

Year-round (except late-July to mid August 2025)

Start time & duration

10 a.m. start, 4-hour experience

Group size

1-10 persons per group (min/max)

Private?

Private booking only

Languages

☒EN ☐CN ☐KR ☐Other:

Guide provided?

Yes (English available)

3-B. Kamakura Garden Tour With a Local Kamakura Garden Designer

Kanagawa／Kamakura



The Experience

Join Ms. Imoto, a garden designer residing in Kamakura, on this tour to carefully selected Japanese gardens. In addition to guiding you through the gardens of Kamakura's famous landmarks such as Engakuji Temple and Jochiji Temple, Ms. Imoto will tell you about the areas' historical sites as well. This experience offers the opportunity to truly immerse yourself in Kamakura.

** Ms. Imoto offers many options arranging different locations. Please inquire for more details.*

Sales Points

- Enjoy natural scenery from the perspective of a garden designer.
- Explore places in Kamakura that only locals know about and learn about Kamakura's history and lifestyle.
- Discover Japanese nature under Ms. Imoto's guidance.

Note: This tour includes 3 hours of walking over different elevations.

General Information

- Contact: Kanagawa DMO
- Business hours: 9:00-17:00
- Website: <https://www.kanagawa-kankou.or.jp/>
- Phone: 045-681-0007
- Email: product@kanagawa-kankou.or.jp

Tour type

Individual

Target

Botany/Japanese local culture enthusiasts

Prices

Please inquire

Includes

Guide fee ・ temple/garden admission fee ・ experience fee (matcha or shakyo sutra writing)

Meeting point

Kita-Kamakura Station
501 Yamanouchi, Kamakura City, Kanagawa Prefecture

Directions

JR Kita-Kamakura Station

Reservation deadline

At least 2 weeks prior

Reservation period

Year-round (except late July-mid August 2025)

Start time & duration

10 a.m. start, 4-hour experience

Group size

1-10 persons per group (min/max)

Private?

Private booking only

Languages

☒EN ☐CN ☐KR ☐Other:

Guide provided?

Yes

4. Private Geisha Performance by Hakone Geisha

Kanagawa/Hakone



The Experience

Enjoy a private geisha performance, one of the most popular forms of entertainment in Japan. Appreciate not only the songs and dances mastered through diligent training, but also traditional interactive geisha games. With the opportunity to converse with geisha, you will gain intimate knowledge the history of geisha and their training.

Sales Points

- Interact with geisha up close and personal.
- Play traditional geisha games watch them perform.
- The number of geisha and performance times may be adjusted depending on your budget.
- Appreciate these performances in the comfort of your accommodation.

Note: Not all accommodations are able to accommodate geisha performances. Some accommodation may specify performance end times.

General Information

- Contact: Kanagawa DMO
- Business hours: 9:00-17:00
- Website: <https://www.kanagawa-kankou.or.jp/>
- Phone: 045-681-0007
- Email: product@kanagawa-kankou.or.jp

Tour types	Individual • group
Target	Anyone interested in geisha
Prices	Please inquire
Includes	3 geisha (dancing geisha will have full makeup, wig, and costume)
Meeting point	Geisha are able to perform at meeting/banquet hall in Kanagawa at the accommodation of your choice
Directions	
Reservation deadline	Reservations accepted from 1 year to at least 10 days prior
Reservation period	Year-round
Start time & duration	Preferred start time 6 to 7 p.m., 2-hour performance (30-min extensions available)
Group size	1-15 persons per group (min/max) Please inquire for groups of 16 or more
Private?	Private booking only
Languages	<input checked="" type="checkbox"/> EN <input type="checkbox"/> CN <input type="checkbox"/> KR <input type="checkbox"/> Other:
Guide provided?	No (English-speaking geisha available)

5. Hakone Hachiri Hiking—Hakone Connection Guided Tour—

Kanagawa／Hakone



The Experience

Arrange a private walking tour led by a local Hakone specialist that is a certified Explore Hakone guide. Enjoy the history and features of Hakone while walking along the Hakone Hachiri Old Pathway. Along the way, you will stop at a *yosegi* woodcraft artisan's shop and 400-year-old *amazake* (sweet sake) teahouse where you may mingle and get to know Hakone residents.

Sales Points

- Enjoy a rare opportunity to connect with Hakone residents and learn about the area's rich history.
- Tour is also suitable for those with little trekking experience.

Note: Price is subject to change based on the current US dollar-Japanese yen exchange rate. Tour may be subject to cancellation in case of inclement weather.

General Information

- Contact: Kanagawa DMO
- Operating hours: 9:00-17:00
- Website: <https://www.kanagawa-kankou.or.jp/>
- Phone: 045-681-0007
- Email: product@kanagawa-kankou.or.jp

Tour types

Individual • group

Target

Outdoor • history enthusiasts

Prices

Please inquire

Includes

Guide fee • lunch • Café charge
※Soba (buckwheat) allergy support not available.

Meeting point

Hakone-Yumoto Station (arrange to meet at your accommodation for additional guide transportation fee)

Directions

Hakone-Yumoto Station

Reservation deadline

At least 2 weeks prior

Reservation period

Year-round except winter

Start time & duration

9 a.m. start, approx. 7-hour experience

Group size

2-8 persons per group (min/max)

Private?

Guided tour portion is private

Languages

☒EN ☐CN ☐KR ☐Other:

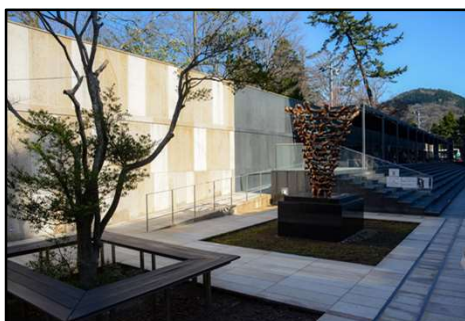
Guide provided?

Yes (English-speaking guides available)

Approx. 6-hour trekking course includes uphill and downhill sections. Wear comfortable walking shoes and appropriate clothing.

6-A. Private After-Hours Guided Tour of the Okada Museum of Art

Kanagawa／Hakone



The Experience

A private guided tour of Okada Museum of Art by a curator, starting with a description of the museum's highlights while relaxing at Kaikaitei, a refined early Showa-era renovated Japanese house.

※Customizable schedule: Enjoy tea at Kaikaitei as a curator explains some of the museum's important works for approx. 60 minutes, then tour the museum to appreciate artwork for another 60 minutes.

An optional car pick-up is available to meet you at Odawara Station or your accommodation in Hakone.

Sales Points

- This experience allows you to leisurely appreciate the museum's artwork while listening to a professional curator describe the pieces after hours when the doors are usually closed to the public.
- The museum has on display about 450 masterpieces of Japanese paintings, ceramics, and Buddhist statues from the 19th century onward; many of which have never been shown anywhere else in Japan.

General Information

- Contact: Kanagawa DMO
- Operating hours: 9:00-17:00
- Website: <https://www.kanagawa-kankou.or.jp/>
- Phone: 045-681-0007
- Email: product@kanagawa-kankou.or.jp

Tour types

Individual ・ group

Target

Art enthusiasts

Prices

Please inquire

Includes

Admission fee ・ guide fee

Meeting point

Okada Museum of Art
493-1 Kowakudani, Hakone-machi,
Ashigarashimo-gun, Kanagawa Prefecture 250-0406

Directions

Right next to Owakudani Bus Stop

Reservation deadline

At least 2 weeks prior

Reservation period

Year-round
Closed to visitors on December 31, January 1,
and during exhibition changeover periods.

Start time & duration

4 p.m. start, 2-hour experience

Group size

2-10 persons per group (min/max)
*Contact us for groups of 11 or more

Private?

Private booking only

Languages

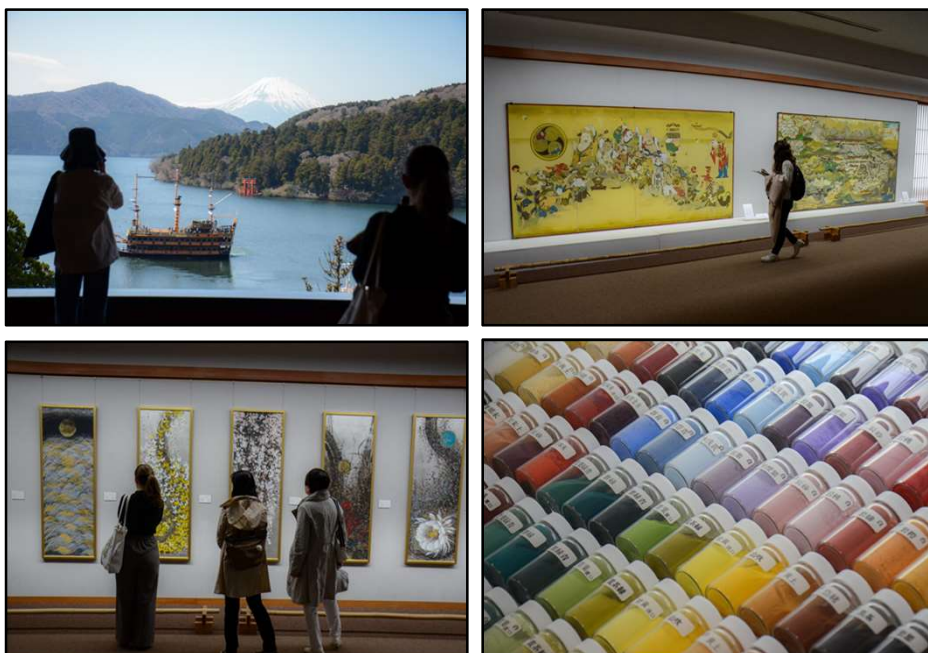
☐EN ☐CN ☐KR ☐Other:

Guide provided?

Yes (Japanese only)

7-A. Private Guided Tour of Narukawa Art Museum & Scenic Teatime (Group)

Kanagawa／Hakone



The Experience

Narukawa Art Museum houses over 4,000 *nihonga*-style Japanese artworks created with mineral paints that last for ages. Museum Director Kanagawa will describe some of the major works during this private group tour. Enjoy coffee or matcha and sweets afterwards in the best seats of the cafe as you admire the stunning view of Lake Ashi (and, weather permitting, even Mt. Fuji). You will also receive a souvenir hand-picked by Director Kanagawa. **Early morning private guided tours may also be arranged.**

Sales Points

- Museum Director Kanagawa is also personally acquainted with painters and recounts fascinating anecdotes, making this a truly special experience.
- Museum Director Kanagawa is well-versed in *nihonga*-style art, explaining the distinctive features so even complete beginners may learn about *nihonga*.
- Café offers a picturesque view of Lake Ashi and Mt. Fuji as well when the weather is clear.

General Information

- Contact: Kanagawa DMO
- Operating hours: 9:00-17:00
- Website: <https://www.kanagawa-kankou.or.jp/>
- Phone: 045-681-0007
- Email: product@kanagawa-kankou.or.jp

Tour type	Group
Target	Intellectual/culture oriented
Prices	Please inquire
Includes	Admission fee ・ guide fee ・ gift ・ café beverage
Meeting point	Narukawa Art Museum 570 Moto Hakone, Hakone, Ashigara Shimo, Kanagawa Prefecture 250-0522
Directions	5-minute walk from Moto-Hakone-Ko (bus stop)
Reservation deadline	At least 3 days prior
Reservation period	Year-round
Start time & duration	Start time flexible, 2-hour experience
Group size	8-10 persons per group (min/max)
Private?	Morning only
Languages	<input type="checkbox"/> EN <input type="checkbox"/> CN <input type="checkbox"/> KR <input type="checkbox"/> Other:
Guide provided?	Yes (Japanese-speaking only)

7-B. Private Guided Tour of Narukawa Art Museum & Scenic Teatime (Small Group)

Kanagawa／Hakone



The Experience

Narukawa Art Museum houses over 4,000 *nihonga*-style Japanese artworks created with mineral paints that last for ages. Museum Director Kanagawa will describe some of the major works during this private group tour. Enjoy coffee or matcha and sweets afterwards in the best seats of the cafe as you admire the stunning view of Lake Ashi (and, weather permitting, even Mt. Fuji). You will also receive a souvenir hand-picked by Director Kanagawa. **Early morning private guided tours may also be arranged.**

Sales Points

- Café offers a picturesque view of Lake Ashi and Mt. Fuji as well when the weather is clear.
- Museum Director Kanagawa is well-versed in *nihonga*-style art, explaining the distinctive features so even complete beginners may learn about *nihonga*.
- Museum Director Kanagawa is also personally acquainted with painters and recounts fascinating anecdotes, making this a truly special experience.

General Information

- Contact: Kanagawa DMO
- Operating hours: 9:00-17:00
- Website: <https://www.kanagawa-kankou.or.jp/>
- Phone: 045-681-0007
- Email: product@kanagawa-kankou.or.jp

Tour type	Individual
Target	Intellectual/culture oriented
Prices	Please inquire
Includes	Admission fee ・ guide fee ・ gift ・ café beverage
Meeting point	Narukawa Art Museum 570 Moto Hakone, Hakone, Ashigara Shimo, Kanagawa Prefecture 250-0522
Directions	5-minute walk from Moto-Hakone-Ko (bus stop)
Reservation deadline	At least 3 days prior
Reservation period	Year-round
Start time & duration	Start time flexible, 2-hour experience
Group size	2-7 persons per group (min/max)
Private?	Morning only
Languages	<input type="checkbox"/> EN <input type="checkbox"/> CN <input type="checkbox"/> KR <input type="checkbox"/> Other:
Guide provided?	Yes (Japanese-speaking only)

8. Odawara Lacquer Workshop Tour & Lacquer Polishing Lesson

Kanagawa／Odawara



The Experience

Tour includes a visit to the workshop of Mr. Hajime Okawa, one of the few traditional craftsmen carrying on the 500-year-old tradition of Odawara lacquerware. Odawara lacquerware souvenir selected by Mr. Okawa is included.

Note: Sharp objects and stray woodchips are common in the workshop. Please avoid these to prevent injury. This activity is not available for children under 6 years.

Sales Points

- Learn about the history and production process of Odawara lacquerware and observe Mr. Okawa shaving the wooden surfaces in his workshop.
- The souvenir is layered lacquer over a based of sturdy keyaki wood. This is something that will last a lifetime.

General Information

- Contact: Kanagawa DMO
- Business hours: 9:00-17:00
- Website: <https://www.kanagawa-kankou.or.jp/>
- Phone: 045-681-0007
- Email: product@kanagawa-kankou.or.jp

Tour types

Individual ・ group

Target

Anyone interested in traditional arts

Prices

Please inquire

Includes

Tour ・ polishing lesson ・ lacquering fee (1 small piece, such as a small teacup, per person)

Meeting point

2-226-2 Itabashi, Odawara City, Kanagawa Prefecture

Directions

4-minute walk from Hakone-Itabashi Station

Reservation deadline

At least 1 month prior

Reservation period

Year-round

Start time & duration

Start between 9 a.m. and 3 p.m., 1.5-hour experience

Group size

1-4 persons per group (min/max)

Private?

Private booking only

Languages

☐EN ☐CN ☐KR ☐Other:

Guide provided?

No

9. Noge Bar Hopping Tour

Kanagawa/Yokohama



The Experience

The Noge Area of Yokohama is home to over 600 bars, izakayas, and eateries that never seem to sleep, no matter what day of the week it is. In this bar hopping tour, your guide will walk you around the district to 3 bars and izakayas. The specific establishments will be selected based on your preferences.

Sales Points

- Your guide is a true local with a thorough knowledge of the area, putting you at ease.
- Establishments and cuisine may be adjusted to meet dietary restrictions and preferences as well as smoking preferences.

General Information

- Contact: Kanagawa DMO
- Business hours: 9:00-17:00
- Website: <https://www.kanagawa-kankou.or.jp/>
- Phone: 045-681-0007
- Email: product@kanagawa-kankou.or.jp

Tour type

Group

Target

Anyone wanting a relaxing out-of-the-ordinary experience or active-interaction with the local scene

Prices

Please inquire

Includes

English guide fee, 1 drink & 1 dish at 3 bars, English menu available

Meeting point

JR Sakuragicho Station or nearby hotel

Directions

(To Noge) 5-minute walk from JR Sakuragicho Station

Reservation deadline

At least 2 weeks prior

Reservation period

Year-round

Start time & duration

Around 3 hrs.

Group size

10 persons per group/ 1-4 groups (min/max)

Private?

Tour is private; bars are open to the public

Languages

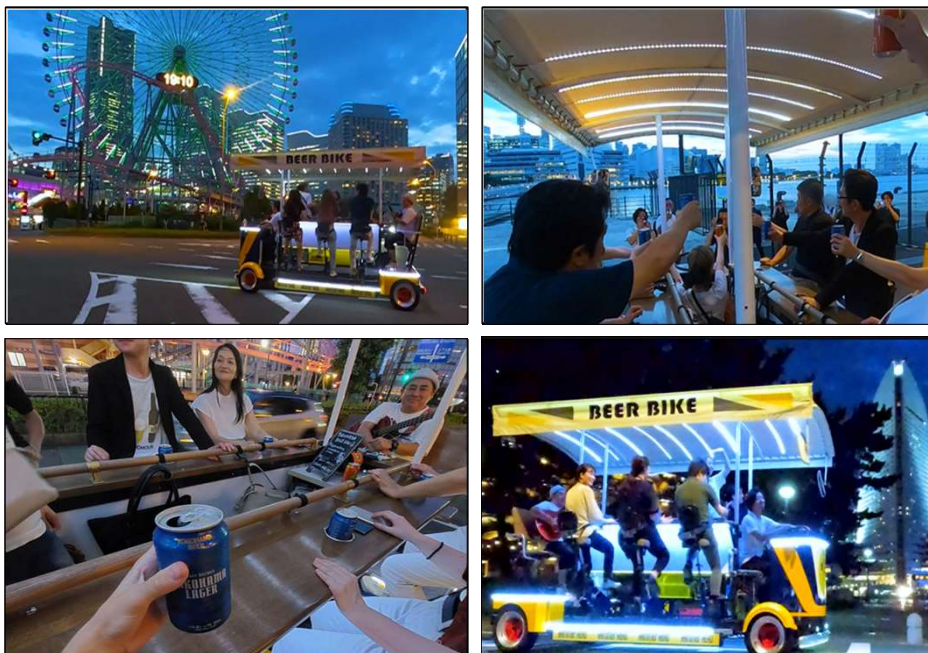
☒EN ☐CN ☐KR ☐Other:

Guide provided?

Yes (English)

10. Yokohama Beer Bike Local Guided Tour in Yokohama

Kanagawa/Yokohama



The Experience

Explore Minato Mirai, a popular area of Yokohama, with a local guide. After the tour, experience night life in a unique way – riding along on a beer bike!

Your tour will start with a local craft beer tasting and guided tour of a microbrewery. Then, you'll hop on your beer bike and pedal the night away while enjoying local Yokohama beer. After savoring the birthplace of Japanese beer, receive a local souvenir before parting with your guide.

Sales Points

- Local guide will show you around Minato Mirai.
- Only place to experience this kind of tour in Japan.
- Take in Minato Mirai's beautiful nightscape.
- Enjoy live music during the beer bike ride

Note: Tour may be canceled in the event of inclement weather. Final decision will be made by 9 p.m. the night before. Please note that the legal drinking age in Japan is 20 years old.

General Information

- Contact: Kanagawa DMO
- Business hours: 9:00-17:00
- Website: <https://www.kanagawa-kankou.or.jp/>
- Phone: 045-681-0007
- Email: product@kanagawa-kankou.or.jp

Tour types

Individual • group

Target

Anyone interested in Japanese craft beer

Prices

Please inquire

Includes

Brewery tour • beer • beer bike rental • souvenir • snack set • guide fee

Meeting point

QUAYS pacific grill
Yokohama Hammerhead 1F/2F, 2-14-1 Shinko,
Naka-ku, Yokohama City, Kanagawa
Prefecture

Directions

14-minute walk from Minato Mirai Station

Reservation deadline

At least 4 weeks prior

Reservation period

Year-round

Start time & duration

4 p.m. start (inquire about different start times),
3-hour experience (approx.)
*Beer bike ride is 1.5 hrs.

Group size

4-6 persons per group (min/max)

Private?

Private booking only

Languages

☒EN ☐CN ☐KR ☐Other:

Guide provided?

Yes (English)

12-A. Yakatabune Private Boat (Japan Summer Festival Theme)

Kanagawa/Yokohama



The Experience

This boat tour takes you from Sakuragicho Sanbashi Pier to photogenic spots around Yokohama's Minato Mirai, Red Brick Warehouse, Yamashita Park, and Bay Bridge areas. At the end, enjoy a Japan summer festival-themed party.

No matter what season, you will be able to peruse summer festival displays and *yatai* food stall fare. Simple yukata are available for sale upon request. ※Yatai stall fare includes takoyaki, yakisoba, oden, nagashi somen noodles, etc. with other dishes that may be arranged upon request (prices vary).

Note: Boat motion may be considerable depending on weather conditions but will not affect the safety of the ride. Please bring anti-nausea medicine if necessary.

Sales Points

- Enjoy a Japanese summer festival at any time of the year.
- Noon and evening time slots are available to fit your itinerary.
- If inclement weather cancels the cruise, you may still enjoy the summer festival.
- Able to accommodate groups up to 50 people.
- All-inclusive package with the boat, food, and festival.

General Information

- Contact: Kanagawa DMO
- Business hours: 9:00-17:00
- Website: <https://www.kanagawa-kankou.or.jp/>
- Phone: 045-681-0007
- Email: product@kanagawa-kankou.or.jp

Tour type

Group

Target

Interactive cultural experience

Prices

Please inquire

Includes

Separate charge for drinks

Meeting point

Sakuragicho Sanbashi Pier
1-101-1 Sakuragicho, Naka-ku, Yokohama City,
Kanagawa Prefecture

Directions

3-minute walk from JR Sakuragicho Station

Reservation deadline

At least 2 weeks prior (reservations accepted up to 6 months in advance)

Reservation period

Monday to Thursday during June, September, October, November 2025, and January, February 2026

Start time & duration

Start at 12 p.m. or 6 p.m., 2-hour boat tour

Group size

20-50 persons per group

Private?

Private booking only

Languages

☐EN ☐CN ☐KR ☐Other:

Guide provided?

No

13. Wadaiko Drum Troupe “Dako-on” Private Performance

Kanagawa／Yokohama



The Experience

Enjoy a private performance by Kanagawa's original wadaiko drum troupe Dako-on. Arrange your private performance at designated locations in Kanagawa Prefecture.

Dako-on first formed in 2006 and established a base in Yokohama. They have won the top prize three times at nationwide taiko competitions since 2011. The group often plays in throughout Japan and the world.

Sales Points

- Enjoy a powerful taiko performance in private.
- Learn the basics of playing taiko drums.
- Feel like you're at a Japanese festival!
- Other venues may also be booked a venue for an extra charge.

Note: At non-designated venues, please obtain permission from the venue in advance for a wadaiko performance.

*Kanagawa DMO is also able to arrange the venue for you (extra charge).

General Information

- Contact: Kanagawa DMO
- Business hours: 9:00-17:00
- Website: <https://www.kanagawa-kankou.or.jp/>
- Phone: 045-681-0007
- Email: product@kanagawa-kankou.or.jp

Tour type	Group
Target	Anyone interested in taiko drums
Prices	Please inquire
Includes	Private performance by Dako-on (6-8 members), taiko drum lesson
Meeting point	Locations may be arranged within Kanagawa Prefecture
Directions	
Reservation deadline	Reservations accepted 2 to 3 months in advance (please inquire)
Reservation period	Year-round
Start time & duration	1 hour (40 min. performance + 20 min. lesson) (Please inquire about start times)
Group size	Up to 30 persons per group (please inquire)
Private?	Private performances only
Languages	<input type="checkbox"/> EN <input type="checkbox"/> CN <input type="checkbox"/> KR <input type="checkbox"/> Other:
Guide provided?	No

14. Samurai Artist KAMUI Private Sword Performance

Kanagawa／Yokohama



写真は全てイメージです

The Experience

Enjoy a private sword technique performance (at an approved venue) by the samurai group, Samurai Artist KAMUI. After the performance, Samurai Artist KAMUI will instruct the group in samurai techniques.

Samurai Artist KAMUI was formed by Tetsuro Shiguchi, choreographer for fight scenes in *Kill Bill Vol. 1* written and directed by Quentin Tarantino. To this day, Samurai Artist KAMUI continue to spread the culture and art of Japanese samurai.

Sales Points

- Enjoy a totally private performance by Samurai Artist KAMUI.
- Feel like the main character in a samurai movie.
- Kanagawa DMO is also able to book the venue for you (extra cost).

Note: Please obtain permission from the venue for a sword performance.

***Kanagawa DMO is also able to make arrangements for you (extra cost).**

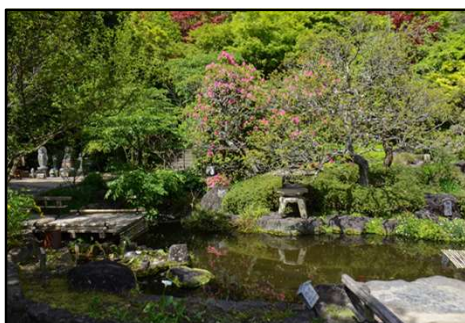
General Information

- Contact: Kanagawa DMO
- Business hours: 9:00-17:00
- Website: <https://www.kanagawa-kankou.or.jp/>
- Phone: 045-681-0007
- Email: product@kanagawa-kankou.or.jp

Tour type	Group
Target	Anyone wanting a relaxing out-of-the-ordinary experience or active-interaction with the local scene
Prices	Please inquire
Includes	Samurai Artist KAMUI group private show (4 members)
Meeting point	Locations may be arranged within Kanagawa Prefecture
Directions	
Reservation deadline	At least 1 month in advance
Reservation period	Year-round
Start time & duration	60-minute performance (Please inquire about start times)
Group size	1-30 persons per group (Please inquire for groups over 30 persons)
Private?	Private performances only
Languages	<input type="checkbox"/> EN <input type="checkbox"/> CN <input type="checkbox"/> KR <input type="checkbox"/> Other:
Guide provided?	No

15. Kamakura Hasedera Temple Private Guided Tour

Kanagawa／Kamakura



The Experience

In this tour, a monk will give you a private guided tour of Hasedera Temple, one of the most famous ancient temples in Kamakura. See the main sights of the temple, pray for good luck and good fortune in the main hall, and tour the temple's museum. Enjoy a drink and traditional Japanese dango dumplings at Kaikoan Restaurant on the temple grounds.

Vegan and vegetarian options are also available.

**Optional sutra copying experience is also available (extra charge).*

Sales Points

- An temple monk will explain the temple's areas in detail.
- Approach and pray to the main Kannon Boddhisattva statue up close, a rare opportunity.

General Information

- Contact: Kanagawa DMO
- Business hours: 9:00-17:00
- Website: <https://www.kanagawa-kankou.or.jp/>
- Phone: 045-681-0007
- Email: product@kanagawa-kankou.or.jp

Tour types

Individual ・ group

Target

Anyone interested in Buddhist temples

Prices

Please inquire

Includes

Tea room fee (beverage & dango dumpling)
Sutra reading & prayer fee

Meeting point

Kamakura Hasedera Temple
3-11-2 Hase, Kamakura City, Kanagawa
Prefecture 248-0016

Directions

5-minute walk from Enoshima Dentetsu Hase
Station

Reservation deadline

Reservations accepted 3 months to 2 weeks
prior to event date

Reservation period

Year-round except for busy periods (January,
April, May, June)

Start time & duration

2 hours

Group size

1-6 persons per group (min/max)
*Please inquire for groups of 7 or more

Private?

Private bookings only

Languages

☐EN ☐CN ☐KR ☐Other:

Guide provided?

Yes (Japanese only)

16-A. Japanese Cultural Experience at Enoshima Shrine (Tea Ceremony, Flower Arrangement, and Prayer Ritual)

Kanagawa／Fujisawa



The Experience

Immerse yourself in Japanese culture at Enoshima Shrine, revered for over 800 years as a deity of the arts. This program offers authentic experiences in flower arrangement and tea ceremony.

In the flower arrangement session, Learn the spirit and techniques of this traditional art, create your own unique floral arrangement, and dedicate it to the shrine deity during a prayer ritual. The session is led by Mr. Kaho Osada, headmaster of Ikenobo Hoshuryu. During the tea ceremony session, learn the philosophy and proper etiquette of tea, gaining a deeper understanding of Japanese traditions.

Sales Points

- Explore areas of the shrine usually closed to the general public.
- Enjoy friendly instruction from a renowned Ikebana headmaster.
- Receive guidance tailored to all skill levels from beginner to advanced.
- Appreciate the headmaster's stunning Ikebana performance up close.
- Participate in unique experiences, such as joining a prayer ritual usually closed to the public.

General Information

- Contact: Kanagawa DMO
- Business hours: 9:00-17:00
- Website: <https://www.kanagawa-kankou.or.jp/>
- Phone: 045-681-0007
- Email: product@kanagawa-kankou.or.jp

Tour types	Individual ・ group
Target	Intellectual pursuit oriented
Prices	Please inquire
Includes	Material fee, instruction fee, shrine ceremony fee
Meeting point	2-3-8 Enoshima, Fujisawa City, Kanagawa Prefecture 251-0036 (Hetsumiya Shrine Office)
Directions	18-minute walk from Katase-Enoshima Station
Reservation deadline	At least 2 weeks prior
Reservation period	Unavailable on the following dates: (1/1–2/3, 3/16, Golden Week, 6/30, 7/1, 2nd Sat and 3rd Mon of July, 9/7–9/9, 11/23, 12/15–12/31). All dates in April, and early October for the autumn festival are also unavailable. Every Tue, Wed, and Thu (available upon request).
Start time & duration	10 a.m. or 1 p.m. start, approx. 3-hour experience
Group size	2–20 persons per group (min/max) <i>*Please inquire for groups larger than 20.</i>
Private?	Private booking only
Languages	<input type="checkbox"/> EN <input type="checkbox"/> CN <input type="checkbox"/> KR <input type="checkbox"/> Other:
Guide provided?	Yes (Japanese only)

16-B. Japanese Cultural Experience at Enoshima Shrine (Flower Arrangement and Prayer Ritual)

Kanagawa/Fujisawa



The Experience

Immerse yourself in Japanese culture at Enoshima Shrine, revered for over 800 years as a deity of the arts. This program offers authentic experiences in flower arrangement.

Learn the spirit and techniques of this traditional art, create your own unique floral arrangement, and dedicate it to the shrine deity during a prayer ritual. The session is led by Mr. Kaho Osada, headmaster of Ikenobo Hoshuryu.

Sales Points

- Explore areas of the shrine usually closed to the general public.
- Enjoy friendly instruction from a renowned Ikebana headmaster.
- Receive guidance tailored to all skill levels from beginner to advanced.
- Appreciate the headmaster's stunning Ikebana performance up close.
- Participate in unique experiences, such as joining a prayer ritual usually closed to the public.

General Information

- Contact: Kanagawa DMO
- Business hours: 9:00-17:00
- Website: <https://www.kanagawa-kankou.or.jp/>
- Phone: 045-681-0007
- Email: product@kanagawa-kankou.or.jp

Tour types	Individual ・ group
Target	Intellectual pursuit oriented
Prices	Please inquire
Includes	Material fee, instruction fee, shrine ceremony fee
Meeting point	2-3-8 Enoshima, Fujisawa City, Kanagawa Prefecture 251-0036 (Hetsumiya Shrine Office)
Directions	18-minute walk from Katase-Enoshima Station
Reservation deadline	At least 2 weeks prior
Reservation period	Unavailable on the following dates: (1/1–2/3, 3/16, Golden Week, 6/30, 7/1, 2nd Sat and 3rd Mon of July, 9/7–9/9, 11/23, 12/15–12/31). All dates in April, and early October for the autumn festival are also unavailable. Every Tue, Wed, and Thu (available upon request).
Start time & duration	10 a.m. or 1 p.m. start, approx. 2.5-hour experience
Group size	2–20 persons per group (min/max); group size may be adjusted upon request
Private?	Private booking only
Languages	<input type="checkbox"/> EN <input type="checkbox"/> CN <input type="checkbox"/> KR <input type="checkbox"/> Other:
Guide provided?	Yes (Japanese only)

17. Kaiseki Cuisine and Tea Pairing at Jyukouan

Kanagawa/Sagamihara



The Experience

Jyukouan, a restaurant housed in a restored 250-year-old thatched-roof residence constructed during the Edo period, offers a unique Kaiseki dining experience paired with teas crafted by the proprietress, who possesses a profound and refined understanding of tea.

Immerse yourself in the art of tea preparation, enhanced by detailed explanations and warm hospitality.

The second-floor attic showcases the traditional craftsmanship of the thatched roof and provides an optional tea ceremony experience.

Sales Points

- The proprietress, a former director at a major Japanese television network, is known for her refined communication skills and extensive knowledge of Japanese tea culture.
- Receive a special souvenir set of tea, harvested exclusively from this region.
- The optional tea ceremony offers an authentic experience embracing Japan's traditional culture.
- **Vegetarian options are also available.**

General Information

- Contact: Kanagawa DMO
- Business hours: 9:00-17:00
- Website: <https://www.kanagawa-kankou.or.jp/>
- Phone: 045-681-0007
- Email: product@kanagawa-kankou.or.jp

Tour types

Individual • group

Target

Active/local interaction oriented
Intellectual pursuit oriented

Prices

Please inquire

Includes

Tea-pairing, Kaiseki cuisine, tea souvenir

Meeting point

533 Chigira, Midori-ku, Sagamihara City, Kanagawa Prefecture

Directions

3.1 km from JR Chuo Line Sagamiko Station

Reservation deadline

Reservations accepted from 6 months to 1 month prior to the event date

Reservation period

Reservations accepted every day except Tuesday

Start time & duration

Starts at 12:00 p.m. (flexible start time available upon request), 2-hour duration

Group size

4-10 persons per group (contact us for groups larger than 10)

Private?

Private room available

Languages

☐EN ☐CN ☐KR ☐Other:

Guide provided?

No

18. Oyama Afuri Shrine Tour & Osamedachi Wooden Sword Offering Experience

Kanagawa/Isehara



The Experience

Climb Mount Oyama, a sacred site with a rich and storied history. Follow a practice popular among pilgrims during the 17th century as you experience the tradition of carrying a wooden sword, called a *tachi*, along the sacred path and then present it as an offering at Oyama Afuri Shrine.

Along the way, local craftsmen will show you how to play spinning Koma tops, and you will enjoy a delicious lunch of tofu dishes, a specialty of Oyama.

After offering the sword, enjoy dessert at Sekison café with its breathtaking views. A priest from Oyama Afuri Shrine will guide you through the experience with an exclusive tour of the shrine grounds, sharing with you stories about the rich history of the mountain.

Sales Points

- Experience a 17th-century tradition popular among pilgrims.
- Visit a power spot sacred since the Jomon period.
- Interact with locals along the Koma Sando path.
- At Afuri Shrine and Sekison café, enjoy spectacular views of Sagami Bay, given a two-star rating in Michelin Green Guide Japan.

General Information

- Contact: Kanagawa DMO
- Business hours: 9:00-17:00
- Website: <https://www.kanagawa-kankou.or.jp/>
- Phone: 045-681-0007
- Email: product@kanagawa-kankou.or.jp

Tour types	Individual & small group
Target	Relaxation & intellectual pursuit
Prices	Please inquire
Includes	Guide fee, spinning top & sword offering experience fee, cable car ticket, lunch, drink and sweets at Sekison café
Meeting point	Oyama Cable Bus Stop Oyama, Isehara-shi, Kanagawa 259-1107
Directions	25 min. by bus from Isehara Station
Reservation deadline	Please make your reservation at least 10 days prior
Reservation accepted	Every day except the 1st of the month
Start time & duration	11 a.m. start, tour takes 4.5 hrs.
Tour size	Minimum of 5 up to a maximum of 10 *Please inquire about groups larger than 10
Private?	Private guided tour (however, tour venues are not exclusive)
Languages	<input checked="" type="checkbox"/> EN <input type="checkbox"/> CN <input type="checkbox"/> KR <input type="checkbox"/> Other:
Guide provided?	Yes (Both Japanese & English are available)

19. Izakaya Mecca Noge—Noge Dreamland Yokocho Festival Program— Kanagawa/Yokohama



The Experience

Take part in this special experience in Noge, one of Japan's most renowned izakaya districts, with a special private event at Noge Dreamland Yokocho comprising seven unique izakayas drawn from among the area's over 600 local establishments. Decorated with colorful traditional lanterns, Noge Dreamland Yokocho offers a steady stream of Japanese cultural performances including live shows by geisha and chindonya street entertainers as well as a spectacular maguro cutting demonstration! Be sure to also enjoy the innovative Japanese sake cocktails infused with traditional Japanese tea at the beverage bar. A premium rickshaw welcome service available for VIP guests and top performers! This experience will create unforgettable memories as you experience Japanese izakaya culture on a journey taking you into the bustling festival atmosphere. How about signing up for this inviting plan for a truly special evening that will be etched in your heart forever?

Sales Points

English menus are available with cuisine also for vegetarian and other special dietary requirements.

Website:

https://yokohamadmc.com/noge_dreamland/index.html

Options available at additional charge.

General Information

- Contact: Kanagawa DMO
- Business hours: 9:00-17:00
- Website: <https://www.kanagawa-kankou.or.jp/>
- Phone: 045-681-0007
- Email: product@kanagawa-kankou.or.jp
- Tour/event management: Yokohama DMC (YDMS Co. Ltd.)

Tour type

Group

Target

MICE and other post-event programs

Prices

Please inquire

Includes

Venue, food & drink charges
 【Extra charge】 Geisha, maguro cutting show, Chindonya street entertainers, English-speaking staff, MC, and rickshaw

Meeting point

1-39-7 Hanasaki-cho, Naka-ku, Yokohama

Directions

5-minute walk from JR Sakuragicho Station

Reservation deadline

2 weeks prior to scheduled date

Reservation accepted

Year-round

Start time & duration

Basic plan: 2 hours
 (Additional charge for time extension)

Tour size

Guaranteed capacity for 100

Private?

Private booking (100~150 persons)

Languages

☒ EN ☐ CN ☐ KR ☐ Other:

Guide provided?

Yes (English-speaking staff available)

Note: Deposit (min. 30%) required at time of reservation.